

ExamsLabs

ExamsLabs

HOME

ALL VENDORS

GUARANTEE

FAQ

TESTIMONIALS

CART (0)

Pass Your Next Certification Exam Fast!

Everything you need to prepare, learn & pass your certification exam easily.

365 days free updates. First attempt guaranteed success.



Select a vendor...

Select an test...

Your email address

Free Download Demo

Try **Online Engine** before you buy

Online Test Engine: Online Tool, Convenient, easy to study. Instant Online Access. Supports All Web Browsers.

PDF format: Easy to read and print learning materials, our products are available in PDF file format.

Desktop Test Engine: Installable Software Application. Simulates Real Exam Environment. Practice Offline Anytime.

What Client's Say

"I passed today with score 80%. I confirm that it's valid in UK. Focus on "Correct answer" and forget the "Answer X from real test". I had free new questions.



Sebastian
★★★★★

"Questions from this HPE0-S51 dump are 100% valid... not all answers. I passed this exam a few days ago (in France) and got these results.



Wayne
★★★★★

<http://www.examslabs.com/>

Latest Study Materials, Valid Dumps - ExamsLabs

Exam : A2050-219

Title : Assessment: IBM Sterling Order Management V9.1 Deployment

Vendors : IBM

Version : DEMO

1. Due to an enterprise-wide license agreement, a company uses a database from a particular vendor. The database to be used for development is supported per the System_Requirements_Guide.pdf. The testing, staging, and production deployments are however going to use a different database (from a different vendor), which is also a supported database. Which statement is true about this situation?

- A. The IBM Sterling Selling and Fulfillment Suite allows for the databases to be different between development, testing, staging and production deployments.
- B. Since the IBM Sterling Selling and Fulfillment Suite uses standard JDBC to connect to the database, questions around compatibility of databases must be directed to the database vendors.
- C. Even though it might work, the IBM Sterling Selling and Fulfillment Suite deployment will be supported by IBM only if the database used for production remains the same as the one used for development.
- D. The IBM Sterling Selling and Fulfillment Suite deployment contains code that is database specific; therefore, it is not advisable to use different database providers between development and production environments.

Answer: A

2. While installing the IBM Sterling Selling and Fulfillment Suite in the GUI mode, the installation fails with an error indicating a user permission issue on the database schema. On researching the issue, it is discovered that the user has not been granted "CREATE TABLE" permission on the schema. The database administrator who can provide access is not accessible until the end of the week. Which statement is true regarding the application installation procedure.?

- A. The installation has to be rerun from the beginning after the permission has been granted to the user.
- B. The IBM Sterling Selling and Fulfillment Suite should be re-installed with the option to use the database bundled along with it.
- C. The installation can be run in a mode such that it does not connect to the database and the database scripts can be run later when the permission issue is resolved.
- D. Since the issue is only a permissions issue, the installation can be run with a parameter in the silent file so it would ignore such errors and complete the installation successfully.

Answer: C

3. Which two segment types are provided in IBM Sterling Selling and Fulfillment Suite?

- A. Made to fulfill
- B. Made to order
- C. Made to stock
- D. Made to demand
- E. Made to customer

Answer: B,E

4. A customer places an order of amount \$100. As per their business rules, if the payment method is credit card the retailer has to authorize the credit card by contacting the payment gateway for the complete order amount before the order can be scheduled. Which execution step needs to be completed for the payments on the order to be authorized and the details stored against the order?

- A. The managePaymentTerms API needs to be invoked with the appropriate order and payment information in the input.
- B. The executePaymentTransactions API needs to be invoked with the appropriate order and payment

information in the input.

C. The Payment Collection, Payment Execution and Payment Collection transactions should be executed in that sequence for the order.

D. The payment status on the order has to be manually changed to UTHORIZED?from the Sterling Selling and Fulfillment Foundation console.

Answer: C

5.A specific customer implementation requires IBM Sterling Selling and Fulfillment Suite to create procurement transfer orders at the time of scheduling the original order. For achieving this, sourcing rules must be configured to use ship nodes instead of distribution rules. Which additional parameters must be passed for the order creation?

A. The shipping node and receiving node are passed at the order line level.

B. The enterprise, buyer, and order type are passed at the order header level.

C. The shipping node, receiving node, and catalog organization are passed at the order line level.

D. The shipping node, receiving node, buyer, and enterprise are passed at the order header and line level.

Answer: A

6.Synchronous services can be invoked in the IBM Sterling Selling and Fulfillment Suite through which two components?

A. Actions

B. Conditions

C. User Exits

D. Agent Server

E. Integration Server

Answer: A,C

7.A company wants to run the schedule agent in multiple environments each having different provider URL values for their JMS queues. However, they do not wish to modify the agent configuration on each environment to the corresponding provider URL value. How can this be achieved?

A. Set the provider_url value in the sandbox.cfg file on each environment correctly.

B. Set the value of the yfs.agent.override.providerurl property in the jms.properties file.

C. Set the value of the yfs.agent.override.providerurl property in the servers.properties file.

D. Override the value of the yfs.yfs.agent.override.providerurl property in the customer_overrides.properties file.

Answer: D

8.Using the Exception Console of the IBM Sterling Selling and Fulfillment Suite, the exceptions raised by asynchronous services can be viewed. The developer needs the ability to view the error XML, modify it, and process it. Which property of the Receiver Link Exception Handling properties should the developer turn on?

A. Is Reprocessible

B. Handle Exceptions

C. Process Exceptions

D. Reprocess Exceptions

Answer: A

9. A retailer needs different types of items to be associated with their corresponding provided services. For example, all the televisions need to be associated with an installation service, whereas microwaves need to be associated with a product demo service. What should be created to help achieve this?

- A. Create an asset for the item contains the associated service.
- B. Create an item classification with the purpose set as service Association
- C. Create item attributes for each item type with purpose set as service Association
- D. Create item categories for each item type with purpose set as service Association

Answer: B

10. Payment Administration users should be able to view only payment related alerts while Node Administrator users should be able to view all alerts. Which approach achieves this?

- A. In the alert configuration in Applications Manager, under Application > Application Platform > Alert > Exception Type appropriately define the users who will need to view the alert.
- B. In the alert configuration for Exception Type Role in Applications Manager, under Application > Application Platform > Alert > Exception Type Role appropriately define the users who will need to view the alert.
- C. In the alert queue configuration in Applications Manager, under Application > Application Platform > Queue Management add the users corresponding to the Payment Administration and Node Administrator users appropriately to the correct queues.
- D. In the alert queue configuration in Applications Manager, under Application > Application Platform > Queue Management add the user groups corresponding to the Payment Administration and Node Administrator users appropriately to the correct queues.

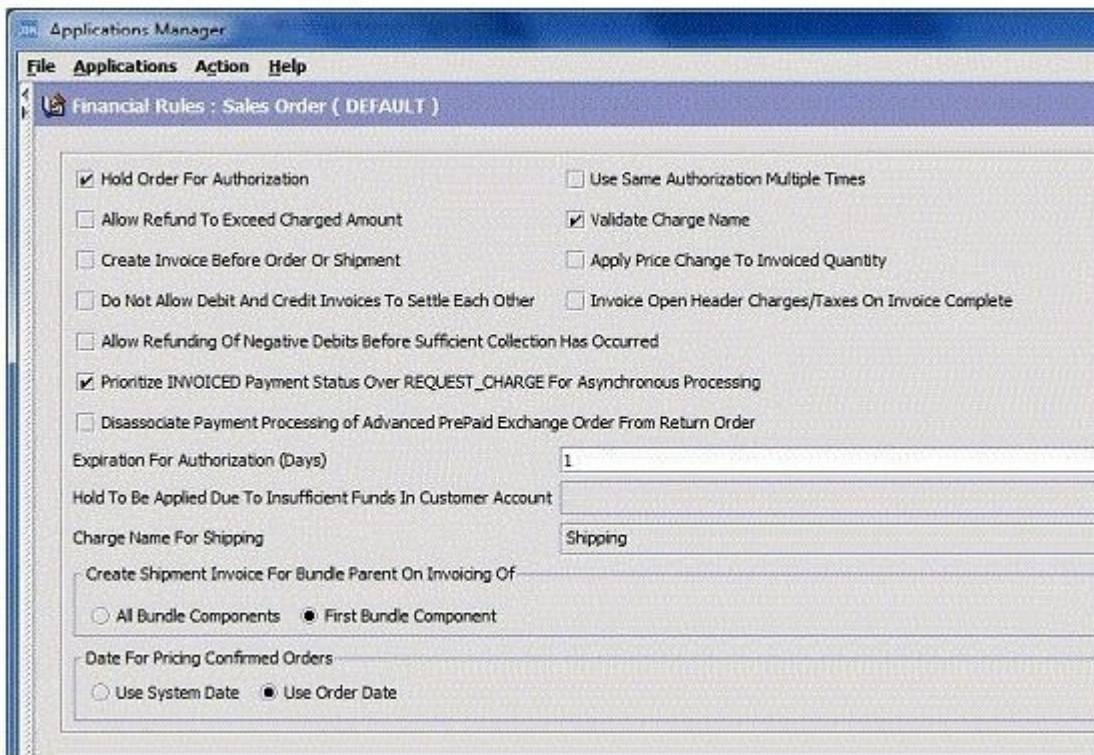
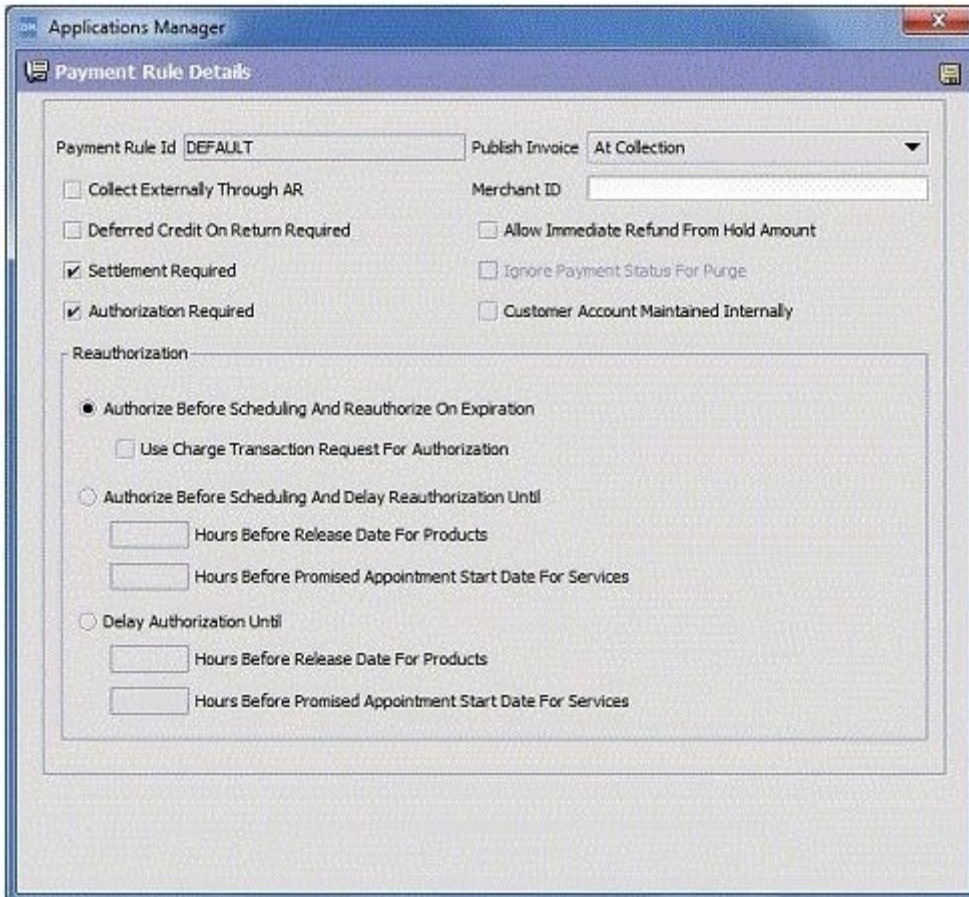
Answer: C

11. A retailer wants to have different process flows for orders created online and from their stores. How can this efficiently be achieved?

- A. Create separate document types for online and store orders.
- B. Configure a hub rule that will move online and store orders to different pipelines.
- C. Implement the YFSVerifyOrderUE to check for the different modes of order capture.
- D. Pass different values for the 'Channel' attribute in the input and distinguish the two in the ON_SUCCESS event of createOrder API.

Answer: B

12. A customer credit card has been authorized with an authorization expiration date of September 28. The order does not get settled before September 28 and the payment configurations are as shown below.



On which date will the IBM Sterling Selling and Fulfillment Suite raise a reauthorization request?

- A. September 27A. September 27
- B. September 28B. September 28

- C. September 29C.September 29
- D. September 30D.September 30

Answer: A

- 13.A buyer in the supply chain network requires certain compliance services (such as adding an RFID label) to be performed for certain items. Which statement is true about the fulfillment process for this item?
- A. Compliance services can be performed for only bundle items.
 - B. Compliance services can be configured at item level for each buyer.
 - C. Compliance services can be configured at the enterprise, buyer, and item level.
 - D. Compliance services can be configured for a buyer at the item classification level.

Answer: D

- 14.A service provider offers installation and haul away services for appliances and furniture. The services are offered by two teams, each specializing in either appliances or furniture. On receiving a request for a service, the service provider would like to use the closest team to the customer that also has the relevant skills. How can this requirement be achieved?
- A. The ship node servicing the customer's shipping address should be stamped as the "ServiceNode" on the service order line.
 - B. The installation and haul away items should be modeled as service items in the catalog and Sourcing rules for provided services should be configured.
 - C. The installation and haul away should be modeled as accessories to the main product (appliance and furniture) so the sourcing rules for the product will also look for capacity for the accessories.
 - D. The service items should be defined in the catalog along with their association with the main product (appliance and furniture). The sourcing rules for the product item will then automatically identify the right ship node that can offer the service.

Answer: B

- 15.An organization is using the Service Builder to create a service for transforming data from one format to the other (EDI to XML). However, they are unable to do so as they encounter errors while trying to save the service. Which two options may be responsible for this?
- A. A transport node is missing.
 - B. A component node is missing.
 - C. An API component exists without System Arguments specified.
 - D. An API component exists without the template file name specified.
 - E. All required properties on all nodes and links do not have values specified.

Answer: B,E